

# Clinical Skills Course

*The aim of this new course is to help you improve your knowledge, skills and understanding of conditions that are commonly found in the elderly, particularly those in long-term care. It will build on the knowledge you already have and will help your clinical decision making, clinical competence and confidence. This course will help you consider which people require further medical help from their GP, who might need admission to hospital, and who may not and will examine the clinical tripwires and tricky decisions you have to make, pointing out key alerts and danger signs on the way.*

## Why do this course?

- \* Builds on your current knowledge.
- \* Boosts your clinical competence and confidence.
- \* As part of Continuing Professional Development.
- \* Complements the work you may be doing with GSF in your workplace.
- \* Mapped to Skills for Care.



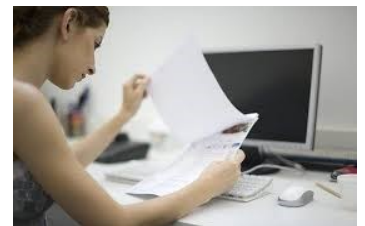
## Who is it for?

- \* This is specifically for any Nurses and Health Care Assistants involved in care for people near the end of life.
- \* Designed originally for those working in long-term care environments such as care homes, but suitable for other work place environments.



## How is it delivered?

- \* The course is self-directed learning with material accessed via the GSF Virtual Learning Zone. It includes filmed teaching, interviews with experts, case histories and activities plus more information and guidance in the accompanying comprehensive workbook.
- \* It has been designed to allow you to continue to study while you work and to reflect and learn from your own daily grass-roots experience and that of your colleagues.
- \* Each session contains clinical information, red flags or areas you should be alerted to.
- \* It includes on-line assessment through MCQ and clinical reflection/case histories.
- \* There will be some online support from the GSF team.



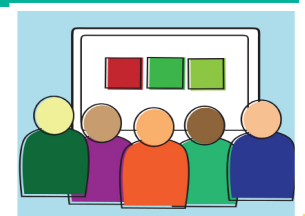
## How long will it take to complete?

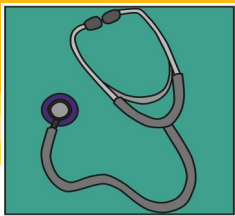
- \* Approximately 12 hours in total, with six 2 hour sessions and 3 Learning Outcomes in each session, to be completed over about 3 months.



## How much will it cost?

- \* Individuals £95 per person (+ VAT).
- \* Groups of 10 or more £75 per person (+VAT).
- \* Larger numbers please contact GSF central office.





## The 6 session subjects are

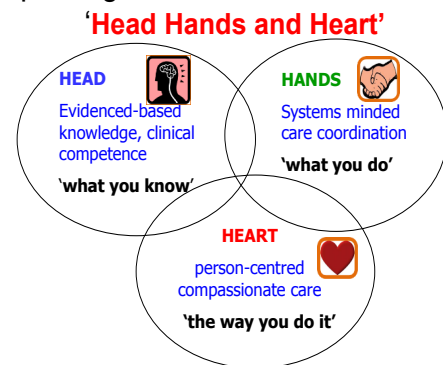
## Learning Outcomes

<b>FRAILITY – Recognition and care</b>	<ul style="list-style-type: none"> <li>To understand and reflect what frailty is</li> <li>To understand and reflect on what problems may occur</li> <li>To understand and reflect on what else can be done and who else can help</li> </ul>
<b>3Ds — Depression, Delirium, Dementia</b>	<ul style="list-style-type: none"> <li>To understand and reflect what the 3Ds are</li> <li>To understand and reflect on what problems may occur</li> <li>To understand and reflect on what else can be done and who else can help</li> </ul>
<b>ORGAN FAILURE — Heart, Respiratory, Renal</b>	<ul style="list-style-type: none"> <li>To understand and reflect what organ failure is</li> <li>To understand and reflect on what problems may occur</li> <li>To understand and reflect on what else can be done and who else can help</li> </ul>
<b>NEUROLOGICAL DISORDERS — CVA/TIA, Parkinson's disease, MND/MS</b>	<ul style="list-style-type: none"> <li>To understand and reflect what neurological conditions are</li> <li>To understand and reflect on what problems may occur</li> <li>To understand and reflect on what else can be done and who else can help</li> </ul>
<b>PAIN— Cause and Management</b>	<ul style="list-style-type: none"> <li>To understand and reflect what pain is</li> <li>To understand and reflect on what problems may occur</li> <li>To understand and reflect on what else can be done and who else can help</li> </ul>
<b>CARE OF THE DYING</b>	<ul style="list-style-type: none"> <li>To understand and reflect what the dying phase is</li> <li>To understand and reflect on what problems may occur</li> <li>To understand and reflect on what else can be done and who else can help</li> </ul>

## How does this fit with other GSF Programmes ?

This is part of the **'head, hands and heart'** approach of GSF in improving end of life care. The standard GSF Programmes enable quality improvements in the 'hands'-on organisation of care, but this course supports your 'head' knowledge and clinical competence, which along with supporting 'heart' aspects care, ensure a comprehensive holistic approach.

### Improving End of Life Care with GSF



For more information please contact The Gold Standards Framework Centre at [info@gsfcentre.co.uk](mailto:info@gsfcentre.co.uk), [www.goldstandardsframework.org.uk](http://www.goldstandardsframework.org.uk) or phone 01743 291891